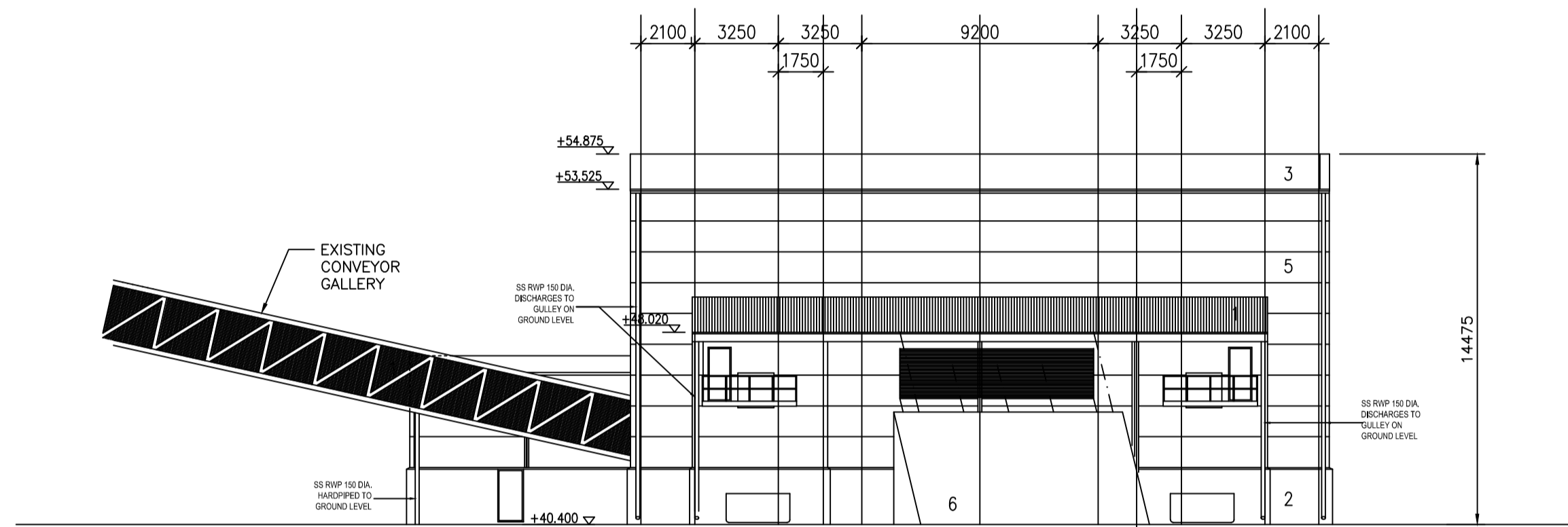
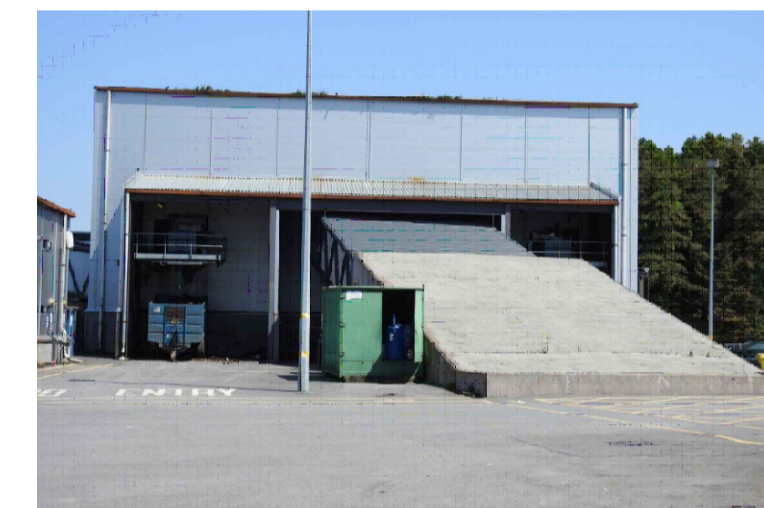


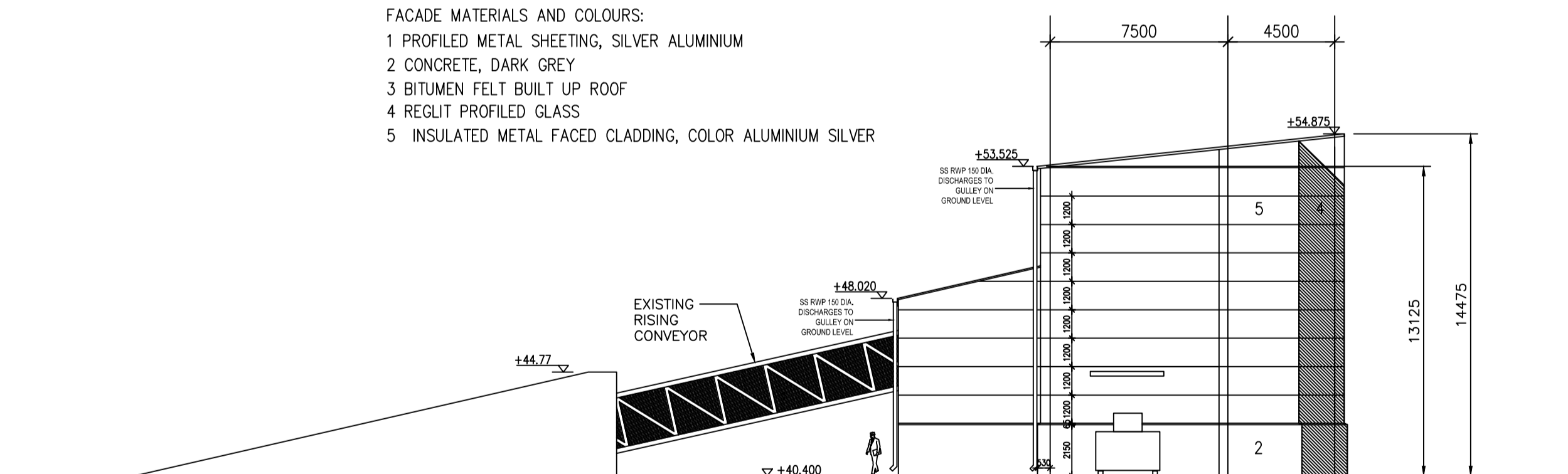
NORTH ELEVATION



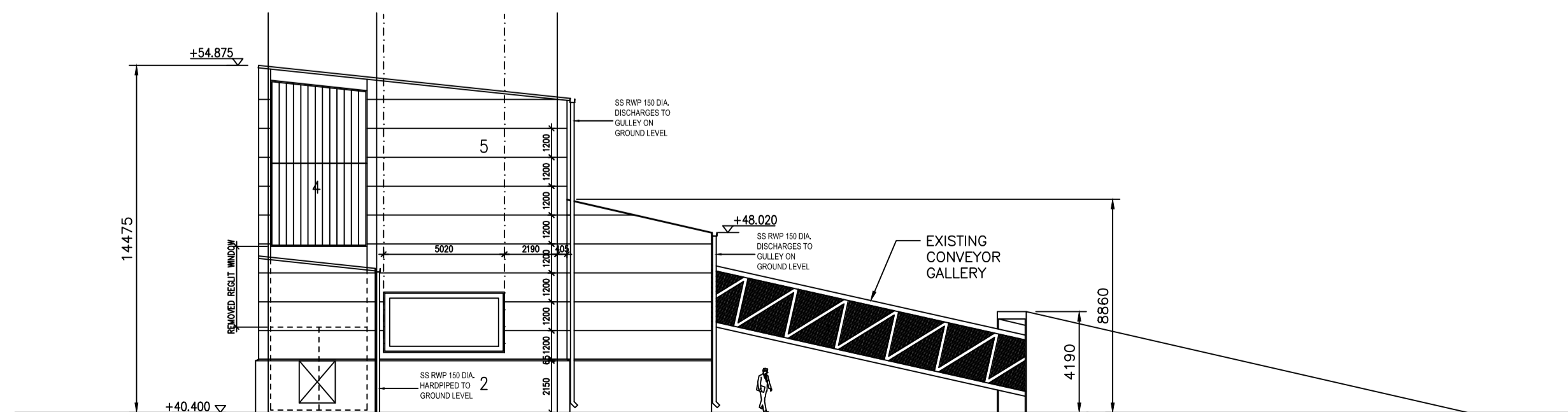
SOUTH ELEVATION



- FACADE MATERIALS AND COLOURS:
- 1 PROFILED METAL SHEETING, SILVER ALUMINIUM
 - 2 CONCRETE, DARK GREY
 - 3 BITUMEN FELT BUILT UP ROOF
 - 4 REGIT PROFILED GLASS
 - 5 INSULATED METAL FACED CLADDING, COLOR ALUMINIUM SILVER



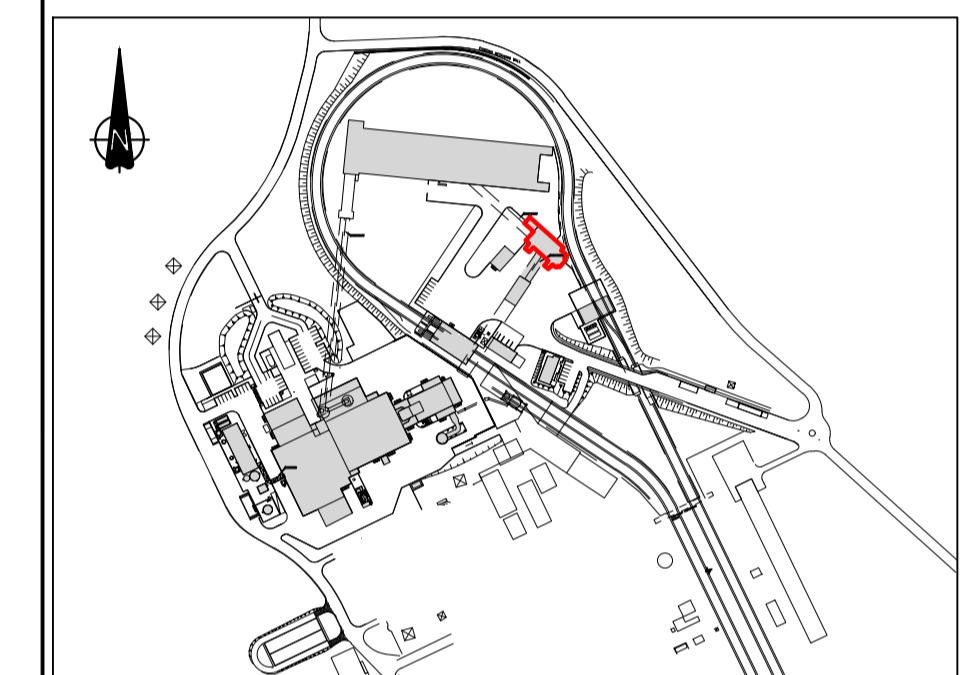
EAST ELEVATION



WEST ELEVATION



KEY PLAN:



REV	DATE	ISSUED FOR PLANNING	KMG	HOK	PK	PN	BH
0	18.10.18	ISSUED FOR PLANNING	KMG	HOK	PK	PN	BH

©COPYRIGHT © ESB INTERNATIONAL LIMITED
 ALL RIGHTS RESERVED. NO PART OF THIS WORK MAY BE MODIFIED, REPRODUCED OR COPIED IN ANY FORM OR BY ANY MEANS - GRAPHIC, ELECTRONIC OR MECHANICAL, INCLUDING PHOTOCOPIING, RECORDING, TYPING OR USED FOR ANY PURPOSE OTHER THAN ITS DESIGNATED PURPOSE, WITHOUT THE WRITTEN PERMISSION OF ESB ENGINEERING & FACILITY MANAGEMENT LTD., TRADING AS ESB INTERNATIONAL.

PURPOSE OF ISSUE - PRELIMINARY UNLESS INDICATED
 CLIENT APPROVAL PLANNING TENDER CONSTRUCTION AS-BUILT

CLIENT: ESB

PROJECT: WEST OFFALY POWER TRANSITION TO BIOMASS

ENGINEER DESIGN: **BORDNÁMÓNA** Naturally Driven
 Engineering Department, Leabog, Tullamore, Co. Offaly Tel: 057 9345900

CONTRACT: WOP - TRANSITION TO BIOMASS

DRAWING TITLE: EXISTING SCREENING BUILDING ELEVATIONS

PRODUCTION UNIT: CIVIL & ENVIRONMENTAL ENGINEERING

One Dublin Airport Central, Dublin Airport, Cloughran, Co. Dublin
 Tel: 353 1 703 8000 Email: marketing@esbi.ie
 Web: www.esbinternational.ie
 ESB International is a trading name of ESB Engineering & Facility Management Ltd. Registered Office: as above Registered in Ireland No. 155249

PRODUCED	VERIFIED	APPROVED	APPROVAL DATE
KMG	HOK	PK	18.10.18

DRAWING NUMBER	SHEET	REV
QS-000206-01-D460-045		0